

# South Gloucestershire Landscape Character Assessment

## Annex II: Strategic Viewpoints

### South Gloucestershire Council

**Final Draft Report for Adoption Chapter 18**

Prepared by LUC

September 2024



Version	Status	Prepared	Checked	Approved	Date
1	Draft Method and Pilot	E White L Jewitt	K Davies	K Davies	03.04.2023
2	Draft Report	L Jewitt V Kakar	E White	K Davies	16.05.2023
3	Draft Report	E White L Jewitt	E White	K Davies	14.07.2023
4	Final Draft	E White L Jewitt	E White	K Davies	01.11.2023
5	Final Draft (updated following New Local Plan Phase 3 consultation)	L Jewitt	E White	K Davies	12.06.2024
6	Final Draft Report for Adoption	L Jewitt	E White	K Davies	11.09.2024



**Land Use Consultants Limited**

Registered in England. Registered number 2549296. Registered office: 250 Waterloo Road, London SE1 8RD. Printed on 100% recycled paper

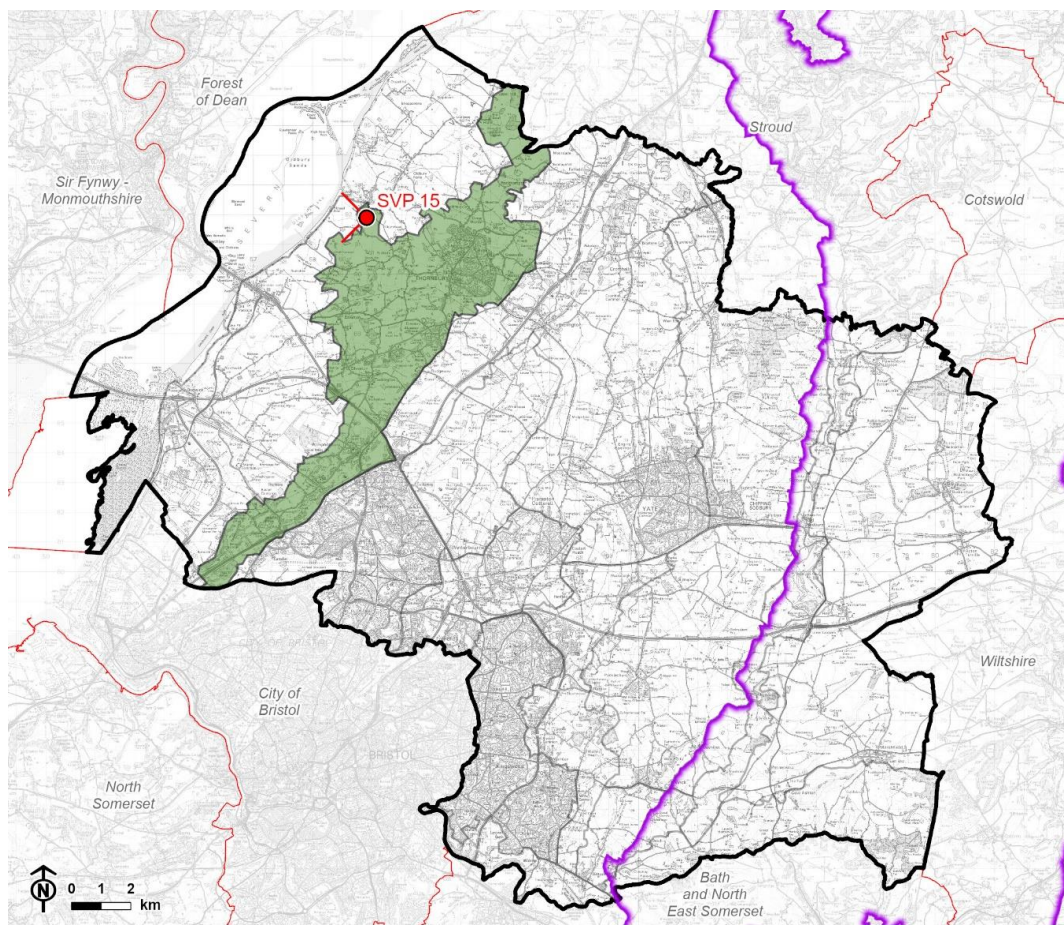
# Contents

<b>Chapter 18</b>	<b>125</b>
Strategic Viewpoint 15: St Arilda’s Church (Oldbury-on-Severn)	
Characteristics	132
Summary	133
<b>References</b>	<b>134</b>

# Chapter 18

## Strategic Viewpoint 15: St Arilda's Church (Oldbury-on-Severn)

**Figure 18.1: Location of Strategic Viewpoint 15 and landscape character context**



© Natural England copyright © Crown copyright and database rights, Ordnance Survey licence number 100023410 (2024). CB:HS, EB:shayler, h LUC 12274\_FiguresUpdates\_MayJune2024\_07/06/2024 Source: LUC, SGDC, NE, OS


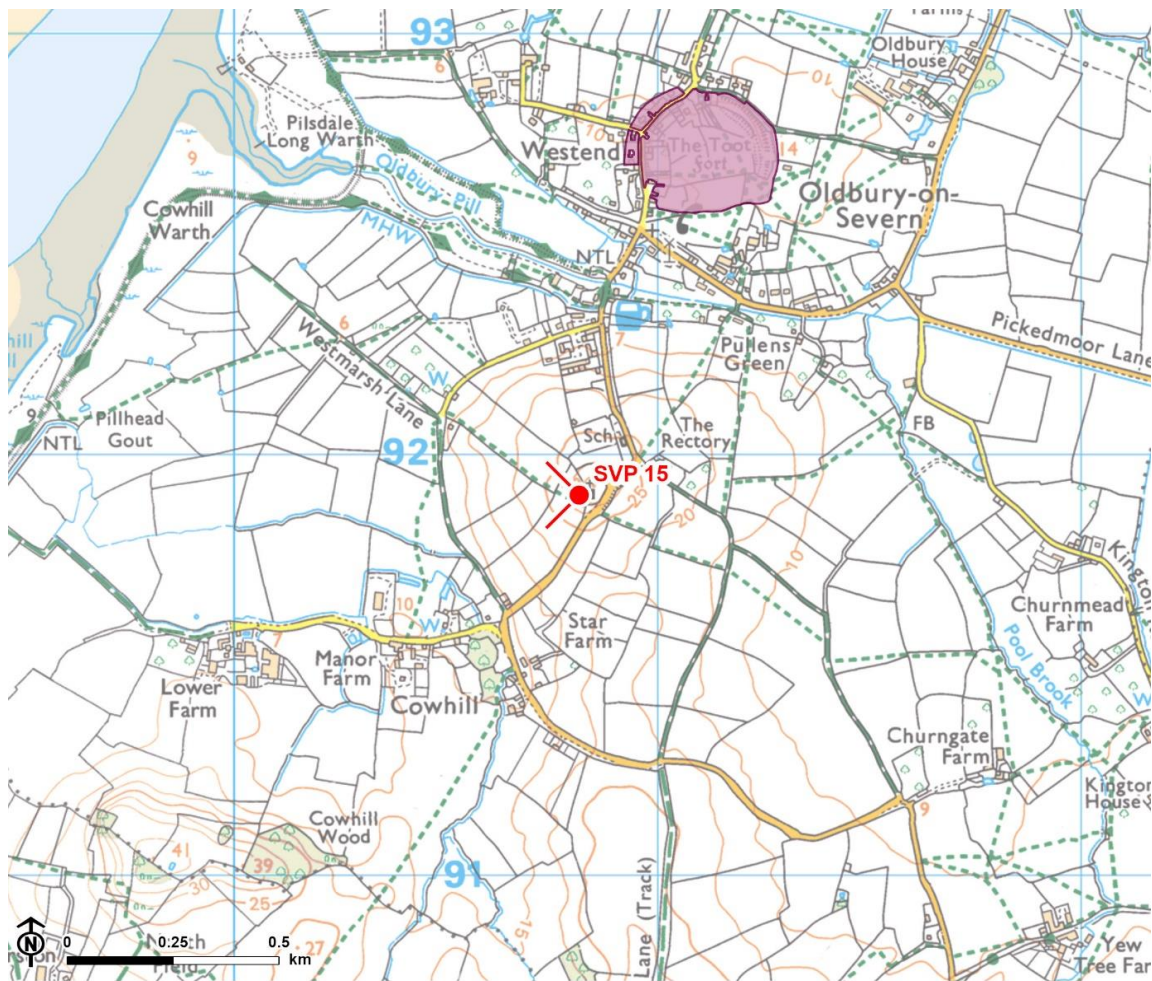

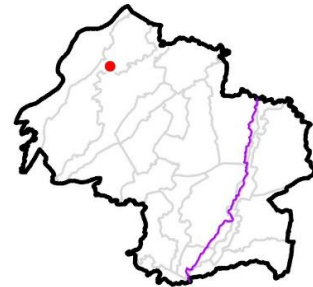
-  Council boundary
-  Neighbouring local authority
-  Cotswolds National Landscape (AONB) boundary
-  LCA 18: Severn Ridges
-  Strategic viewpoint and angle

Figure 18.2: Detailed map of the location of Strategic Viewpoint 15



© Natural England. © Historic England. Contains Ordnance Survey data © Crown copyright and database rights, Ordnance Survey licence number 100023410, 2024.

-  Council boundary
-  Cotswolds National Landscape (AONB) boundary
-  Scheduled monument
-  Strategic viewpoint and angle



## Viewpoint Information

**Grid reference:** ST 60830 91929

**View location:** St Arilda's Church, Cowhill, Oldbury on Severn.

**View direction:** View west across LCA 20: Pilning Levels and LCA 21: Estuary, Shoreline and Levels.

**Relationship with Visually Important Hillside (VIH):** The viewpoint is located on Cowhill, an outlier of the Severn Ridges VIH.

**Experienced by:** Visitors to the church and burial ground, recreational users of public rights of way including footpaths OOS/82/10 and OOS/83/10, transient views for cyclists and motorists travelling along Church Lane.

Figure 18.3: View Composition of Strategic Viewpoint 15 (view south-west)



 Key landscape feature

 Landmark / historic feature

 Detractive feature

Figure 18.4: View Composition of Strategic Viewpoint 15 (view north-west)



 Key landscape feature

 Landmark / historic feature


 Detractive feature



Figure 18.5: Full Panoramic Photograph of Strategic Viewpoint 15



Strategic Viewpoint 15: St Arilda's Church



Strategic Viewpoint 15 (continued)



Strategic Viewpoint 15 (continued)

## Characteristics

### Popularity, access and facilities

- Cowhill and St Arilda's Church are mentioned in two walking route guides produced as part of the 'A Forgotten Landscape' project: Route 4 (Oldbury-Kington loop) [See reference 1] notes the *"stunningly sited St Arilda's church, from which there are beautiful views across the estuary"* and Route 5 (Long Littleton Loop) [See reference 2] notes the *"wonderful views"* available from the church.
- Views from this viewpoint are representative of those described in LCA 18: Severn Ridges, which states that *"the rounded tump to the north of Cowhill, crowned by St Arilda's Church, is a prominent and distinctive landmark locally, both within this area and the adjacent Pilning Levels"*.
- The viewpoint is publicly accessible via Church Lane, as well as from a number of public rights of way adjoining the road including OOS/82/10, OOS/83/10, OOS/60/10 and OOS/81/10.
- A toposcope and a bench are provided within the churchyard to facilitate enjoyment and interpretation of the view.

### Quality, value and features of the view

- An elevated viewpoint located on an outlier hill of the Severn Ridges VIH, which provides a panoramic (180°) view over the surrounding 'levels' landscape (characterised by flat, small and regular fields, and blocks of woodland), towards the Severn Estuary, and beyond to the wooded hills of the Wye Valley and South Wales.
- The Severn Bridge forms a prominent landmark feature in views to the south-west 4.5km away, with glimpsed distant views to the Prince Wales Bridge beyond (10km away). Oldbury Power Station and Berkley Power Stations also form landmark features to the north-west (2.5km and 9km away, respectively).
- Several pylon lines slightly detract from the overall composition of the view.

## Summary

The St Arilda's Church (Oldbury-on-Severn) viewpoint is categorised as a SVP as it meets most of the criteria to some extent. It is a popular, well known and recorded viewpoint and likely to attract many visitors; it is noted in the South Gloucestershire Landscape Character Assessment as being a natural observation point from which to appreciate the landscape; it is located on a public footpath with a bench and toposcope facilitating enjoyment and interpretation of the view; and it provides a panoramic view that takes in the notable landscape features of the levels, Severn Estuary and hills of the Wye Valley and South Wales, and the landmark features of the Severn Bridge, the Prince of Wales Bridge, Oldbury Power Station and Berkley Power Station.

## References

# References

- 1 A Forgotten Landscape 'Oldbury Kington Loop' walking route guide. (No date). Available at: <https://www.aforgottenlandscape.org.uk/projects/oldbury-kington-loop/>
- 2 A Forgotten Landscape 'Long Littleton Loop' walking route guide. (No date). Available at: [https://www.aforgottenlandscape.org.uk/wp-content/uploads/2018/10/RW05web\\_LongLittleL.pdf](https://www.aforgottenlandscape.org.uk/wp-content/uploads/2018/10/RW05web_LongLittleL.pdf)

Report produced by LUC

# Report produced by LUC

## **Bristol**

12th Floor, Colston Tower, Colston Street, Bristol BS1 4XE

0117 929 1997

bristol@landuse.co.uk

## **Cardiff**

16A, 15th Floor, Brunel House, 2 Fitzalan Rd, Cardiff CF24 0EB

0292 032 9006

cardiff@landuse.co.uk

## **Edinburgh**

Atholl Exchange, 6 Canning Street, Edinburgh EH3 8EG

0131 202 1616

edinburgh@landuse.co.uk

## **Glasgow**

37 Otago Street, Glasgow G12 8JJ

0141 334 9595

glasgow@landuse.co.uk

## **London**

250 Waterloo Road, London SE1 8RD

020 7383 5784

london@landuse.co.uk

## **Manchester**

6th Floor, 55 King Street, Manchester M2 4LQ

0161 537 5960

manchester@landuse.co.uk

## **landuse.co.uk**

Landscape Design / Strategic Planning & Assessment

Development Planning / Urban Design & Masterplanning

Environmental Impact Assessment / Landscape Planning & Assessment

Landscape Management / Ecology / Historic Environment / GIS & Visualisation